

9515825479
PARTICIPANT ID

P2017000006

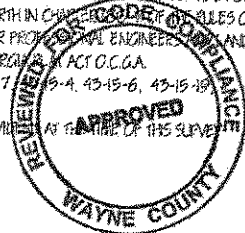
FILED IN OFFICE
CLERK OF COURT
02/06/2017 01:12 PM
FRANCES B. YEARGAN, CLERK
SUPERIOR COURT
WAYNE COUNTY, GA

Frances B. Yeagan

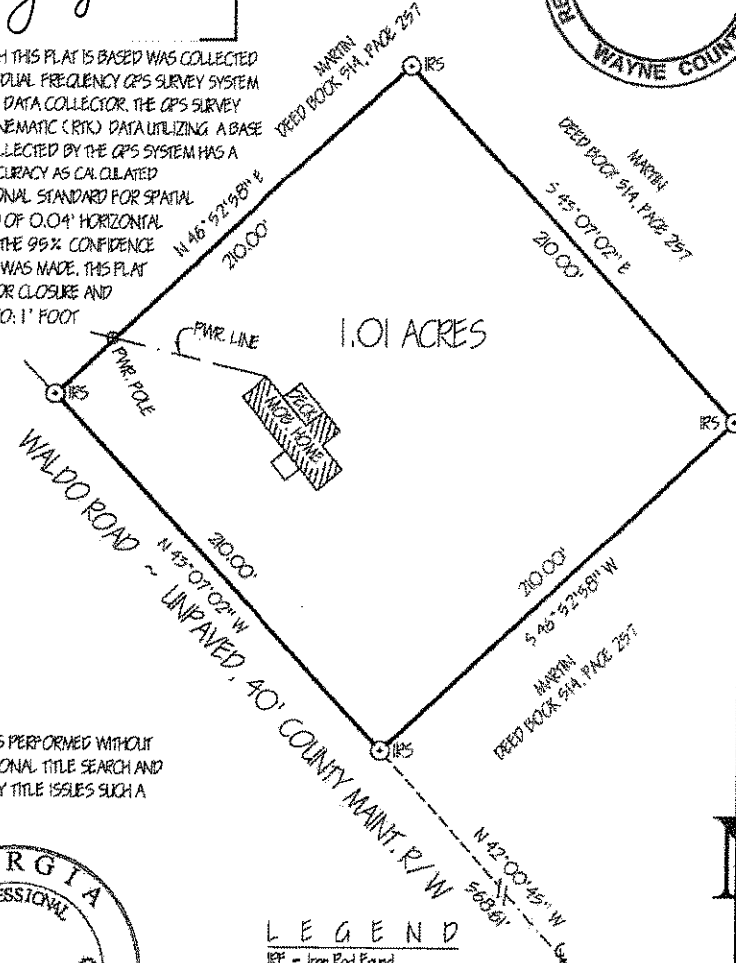
THE UNDERSIGNED AFFIRMS THAT THIS PLAT IS APPROVED FOR RECORDING IN THE RECORDS OF THE CLERK OF COURT OF WAYNE COUNTY, GEORGIA PER THE REQUIREMENTS OF SUBSECTION (C) O.C.G.A. SECTION 15-6-67 OR THAT SUCH APPROVAL IS NOT REQUIRED.

[Signature] 2/3/17
CLERK OF COURT, WAYNE COUNTY, GEORGIA DATE

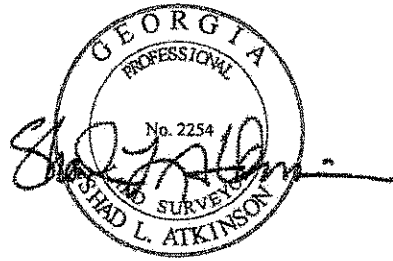
THIS SURVEY WAS PREPARED IN CONFORMITY WITH THE TECHNICAL STANDARDS FOR PROPERTY SURVEYS IN GEORGIA AS SET FORTH IN CHAPTER 50 OF THE RULES OF THE GEORGIA BOARD OF REGISTRATION FOR PROFESSIONAL ENGINEERS, SURVEYORS AND AS SET FORTH IN THE GEORGIA CONSTITUTION ACT O.C.G.A. 15-6-67 AUTHORITY O.C.G.A. SECS. 15-6-67, 15-6-68, 15-6-69, 15-6-70, 15-6-71, 15-6-72, 15-6-73, 15-6-74, 15-6-75, 15-6-76, 15-6-77, 15-6-78, 15-6-79, 15-6-80, 15-6-81, 15-6-82, 15-6-83, 15-6-84, 15-6-85, 15-6-86, 15-6-87, 15-6-88, 15-6-89, 15-6-90, 15-6-91, 15-6-92, 15-6-93, 15-6-94, 15-6-95, 15-6-96, 15-6-97, 15-6-98, 15-6-99, 15-6-100. NO CEMETERIES OR BURIAL PLOTS WERE EVILATED AT THE TIME OF THIS SURVEY.



THE FIELD DATA ON WHICH THIS PLAT IS BASED WAS COLLECTED USING A TOPCON HIPER II DUAL FREQUENCY GPS SURVEY SYSTEM AND A TOPCON FC-200 DATA COLLECTOR. THE GPS SURVEY COLLECTED REAL TIME KINEMATIC (RTK) DATA UTILIZING A BASE AND RECEIVER. DATA COLLECTED BY THE GPS SYSTEM HAS A RELATIVE POSITIONAL ACCURACY AS CALCULATED ACCORDING TO THE NATIONAL STANDARD FOR SPATIAL DATA ACCURACY (NSDAS) OF 0.04' HORIZONTAL AND 0.06' VERTICAL AT THE 95% CONFIDENCE LEVEL. NO ADJUSTMENT WAS MADE. THIS PLAT HAS BEEN CALCULATED FOR CLOSURE AND FOUND TO BE ACCURATE TO: 1' FOOT PLUS INFINITY.

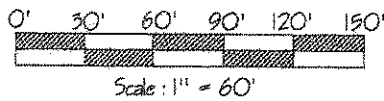


NOTE: THIS SURVEY WAS PERFORMED WITHOUT BENEFIT OF A PROFESSIONAL TITLE SEARCH AND MAY BE SUBJECT TO ANY TITLE ISSUES SUCH A SEARCH MAY REVEAL.



LEGEND

- IRF - Iron Rod Found
- IRS - Iron Rod Set
- R/W - Right of Way
- PL - Property Line
- CMF - Concrete Monument Found
- IPF - Iron Pipe Found
- EP - Edge of Pavement
- C - Centerline



ATKINSON LAND SURVEYING
Shad L. Atkinson, PLS No. 2254
140 Forest Drive, Jessup, Georgia 31545
(912) 427-7129

PLAT OF BOUNDARY SURVEY OF: 1.01 ACRES

FOR
CHARLES S. MARTIN
LOCATED IN LAND LOT 341 OF LAND DISTRICT 4,
FORMERLY APPLING, NOW WAYNE COUNTY, GEORGIA

DATE: JANUARY 26, 2017

SCALE: 1"=60'

SURVEY NO. 017-004

APPROVED