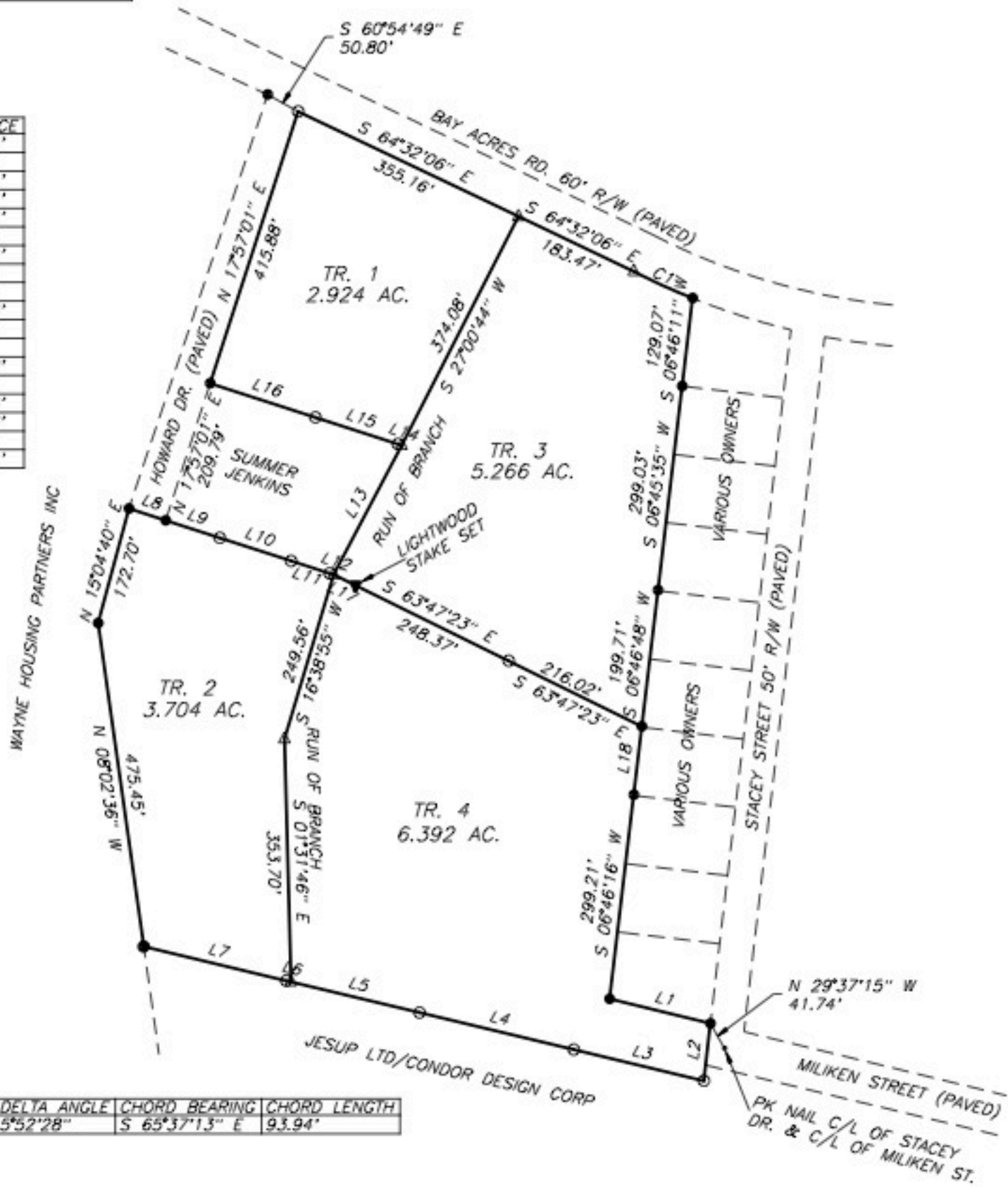


LINE	BEARING	DISTANCE
L1	S 76°18'08" E	151.14'
L2	S 06°37'09" W	84.01'
L3	N 76°30'54" W	194.71'
L4	N 76°30'54" W	230.84'
L5	N 76°30'54" W	192.44'
L6	N 76°30'54" W	7.16'
L7	N 76°30'54" W	213.14'
L8	S 72°05'52" E	56.18'
L9	S 72°05'52" E	82.63'
L10	S 72°05'52" E	109.16'
L11	S 72°05'52" E	58.90'
L12	S 72°05'52" E	6.17'
L13	N 27°47'03" E	212.72'
L14	N 72°03'11" W	6.00'
L15	N 72°03'11" W	126.16'
L16	N 72°03'11" W	161.03'
L17	S 63°47'23" E	35.68'
L18	S 06°40'12" W	100.24'



CURVE	ARC LENGTH	RADIUS	DELTA ANGLE	CHORD BEARING	CHORD LENGTH
C1	93.98'	916.60'	5°52'28"	S 65°37'13" E	93.94'

I certify this plat to be a true and accurate representation of the land platted and it conforms to the minimum standards and requirements of law, and is suitable for recording.

I certify that in my opinion, the provisions in O.C.G.A. Section 15-06-67(d) does not require approval of this plat by the planning commission.

Everett Tomberlin, the Land Surveyor whose seal is affixed hereto does not guarantee that all easements which may affect this property are shown.



Pursuant to the Development Code of _____ County, Georgia, All requirements have been fulfilled and this plat is approved.
 This _____ Day of _____, 20____.
 Codes Director, _____ County, Georgia

The equipment used in obtaining the linear and angular measurements used in the preparation of this plat was:
 100' TAPE
 CARLSON BRX6
 RT3

SURVEY FOR: **FORISK HOLDINGS LLC**
 Land Lot: 425 G.M.D.: Survey Date: 09/14/2021 Date Drawn: 09/25/2021
 Land Dist.: 3RD City: JESUP Drawn By: ET JOB REF. RYKER4LOTS
 County WAYNE State: Georgia Scale: 1"=200' Checked By: ET

The field data upon which this plat is based has a closure precision of one foot in 10000 feet, and an angular error of _____ per angle point, and was adjusted using the _____ rule. This plat has been calculated for closure and has been found to be accurate within one foot in 100000+ feet.

REFERENCES:
 PLAT:
 DEED:

This plat has been recorded in Plat Book _____ Page _____ in the Office of the Clerk of Superior Court of _____ County, Georgia. This _____ day of _____, 20____.

 Clerk of Superior Court

- 1/2" re-bar set
- Iron Pin or Pipe Found
- Concrete Monument Set
- Concrete Monument Found
- ▲ Computed Point
- ◆ Land Lot or Legal Tie Point



EVERETT TOMBERLIN and ASSOCIATES



EVERETT TOMBERLIN REGISTERED LAND SURVEYOR #2922
 1144 RADIO STATION ROAD
 ALMA, GEORGIA 31510
 PH. 912-632-8034 FAX 912-632-0734